

# ANTAIRA NMS

## Network Management Suite

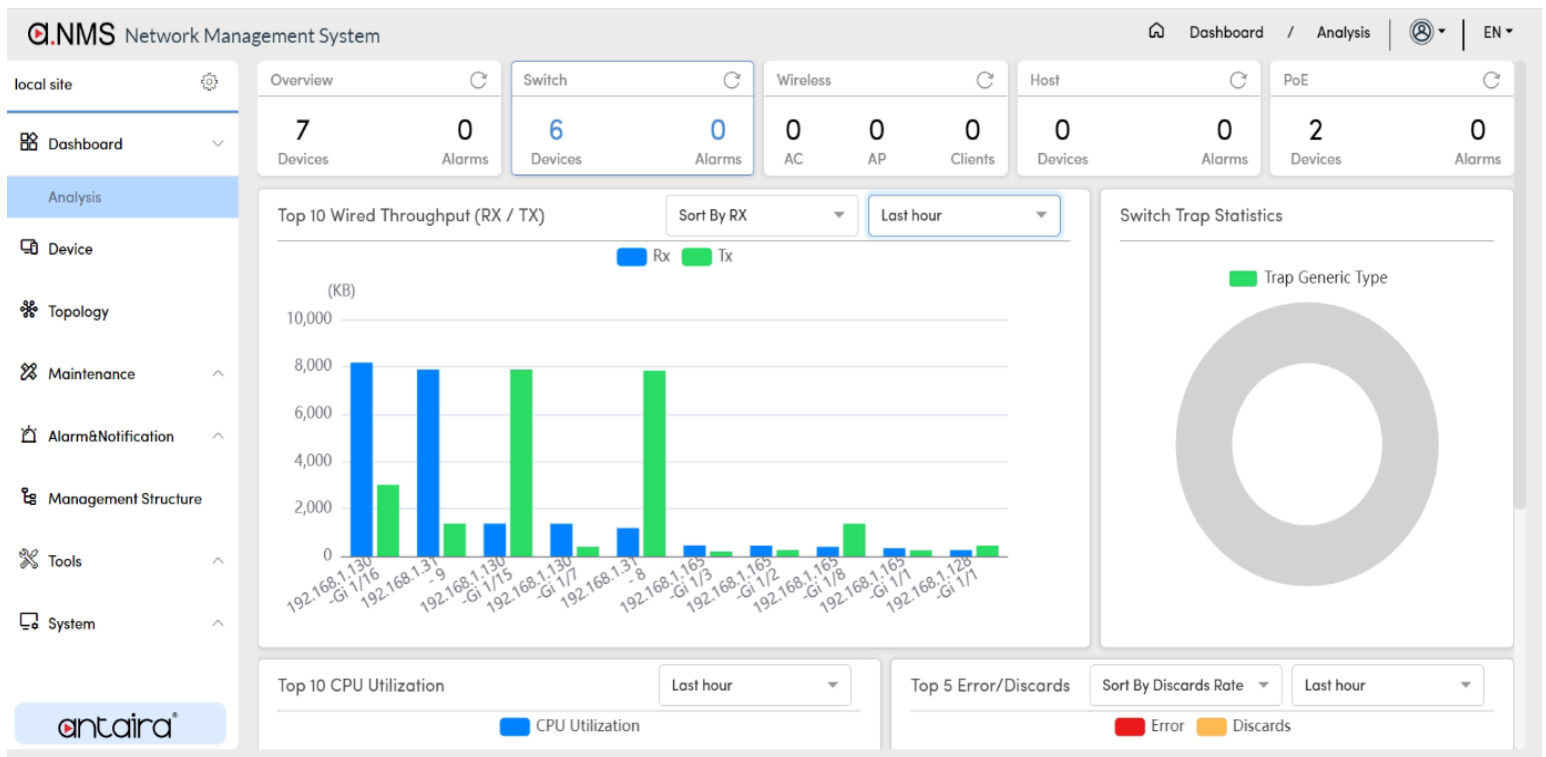


### FEATURES AND BENEFITS

- Dashboard for a quick overview
- Auto-discovery of supported devices
- Device lists and grouping
- Topology views
- Firmware management
- Configuration management
- Alarm and Notifications
- Trap management
- Syslog management
- User privileges management
- Troubleshooting features (Ping and TraceRoute)
- Backup and restore

### INTRODUCTION

The Antaira NMS system was designed to help manage large numbers of Antaira switches, specifically targeting firmware updates and configuration backup and restores. This management tool can monitor supported devices through a visual dashboard of SNMP traps and syslog information.



## NETWORK MANAGEMENT

Antaira NMS is based on ISO FACPS, a framework defining five critical categories for network management:

- 1. Fault Management:** The NMS Identifies, diagnoses, and resolves network problems. It detects issues such as device failures, link disruptions, and data transmission errors.
- 2. Accounting Management:** Leveraging NMS to track resource usage and identify bottlenecks. NMS reports optimize resource allocation by providing insights into user activity, bandwidth performance and utilization, inventory management, and trap/alarm information.
- 3. Configuration Management:** This category configures network devices for optimal performance and security. NMS tools enable remote configuration, access controls, and VLAN management. It also supports configuration file backup, restore, and file comparison to track configuration changes over time.
- 4. Performance Management:** Provides a comprehensive view of your network. The dashboard delivers a network health overview, while the device list and detailed views offer in-depth insights into individual device performance. Key metrics like throughput, packet loss, and response times are readily available for troubleshooting and optimization purposes.
- 5. Security Management:** NMS empowers administrators to establish a robust security posture by centralizing user creation, and managing granular access privileges. This comprehensive approach strengthens network security by minimizing unauthorized access, streamlining user management, and enhancing auditability for improved compliance.

The screenshot displays the Antaira NMS Network Management System interface. The main area shows a network topology diagram with several devices connected to a central hub. The devices are labeled with their model names and IP addresses: LMX-1001G-SFP-T (192.168.1.215), LMP-C602B-SFP-b1-T (192.168.1.207), LMX-2004G-SFP (192.168.1.128), LMP-0702G-SFP-b1-24-T (192.168.1.139), LMX-2012G-SFP-T (192.168.1.165), and LMP-18 (192.168.1.128). The connections are labeled with '1G' and 'ERPS'. A detailed view of a line port is shown on the right, displaying the following information:

Line Information			
Status	up	Detection Source	LLDP
Capacity	1G	Utilization	0.00%
Traffic RX / TX	1.55Kbps/3.70Kbps		
Last Updated	2024-07-11 09:19:36		

Line Port			
IP	Port	Protection State	Port State
192.168.1.165	GigabitEthernet 1/2	idle	OK
192.168.1.128	GigabitEthernet 1/1		

## ORDERING INFORMATION

Contact Antaira Technologies at [sales@antaira.com.tw](mailto:sales@antaira.com.tw) or +886-2-2218-9733 to learn more.

© Antaira Technologies, LLC. All rights reserved. 202408  
Specifications are subject to change without notice and without incurring any obligation.