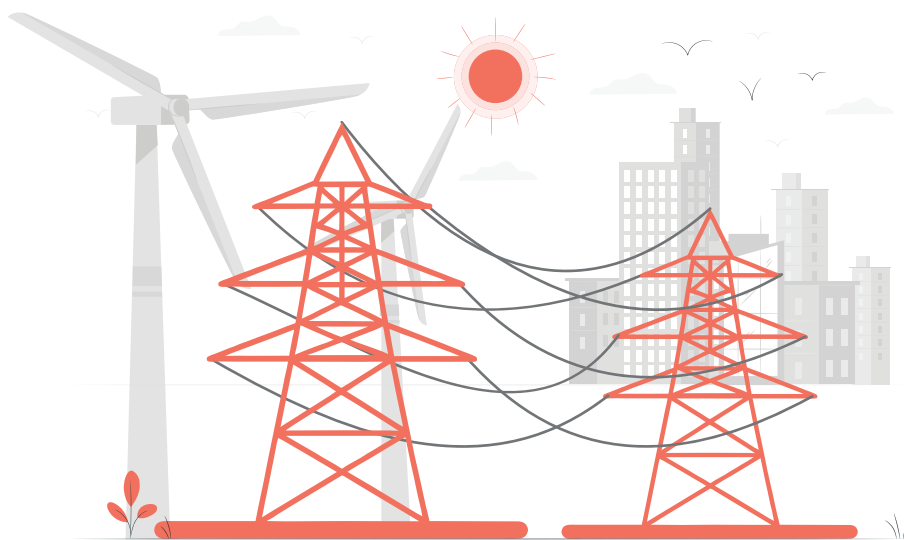


# IEC 61850-3

## Selection Guide



LMP-1802G-SFP-T



LMX-2004G-SFP-T



LMP-2004G-SFP-T



LMX-1600G-T



LMP-1600G-T

### Technical Information

Number of Ports	18	20	20	16	16
10/100/1000Base-TX	16	16	16	16	16
100/1000Base-X SFP	2	4	4	-	-
IEEE 802.3at PoE (P.S.E.)	16	-	16	-	16
Jumbo Frame Support	✓	✓	✓	✓	✓

### Power Requirements

Redundant Power Inputs	48V-55VDC	12V-48VDC	48V-55VDC	12V-48VDC	48V-55VDC
Overload Current Protection	✓	✓	✓	✓	✓
Reverse Polarity Protection	✓	✓	✓	✓	✓

### Mechanical Characteristics

Housing	Metal, IP30 protection	Metal, IP30 protection	Metal, IP30 protection	Metal, IP30 protection	Metal, IP30 protection
Dimensions (WxHxD mm)	67x142x99	67x142x99	67x142x99	67x142x99	67x142x99
Din-Rail & Panel Mounting	✓	✓	✓	✓	✓

### Operating Temperature

Standard (-10 to 65°C)	✓	✓	✓	✓	✓
Extended (-40 to 75°C)	✓	✓	✓	✓	✓

### Standards & Certifications

EN 61000-6-4 / EN 61000-6-2	✓	✓	✓	✓	✓
FCC Part 15B / CISPR 22	✓	✓	✓	✓	✓
IEC 61850-3	✓	✓	✓	✓	✓

